



# The Welby Way BEE LINE

**THE LATEST NEWS AT WELBY WAY ELEMENTARY SCHOOL**

Bridget Keyser, Editor

[www.welbyway.org](http://www.welbyway.org)

Monday, October 3, 2004



## SCHOOL ATTENDANCE REMINDERS AND TIPS

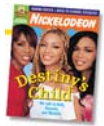


Regular school attendance is important if a child is to achieve his or her full potential. As the new school year begins, we urge you to make an extra effort to ensure that your child established a regular attendance pattern. We congratulate those students & parents who are already meeting this goal.

The following are school attendance tips for parents:

1. Make sure your child goes to bed early (8:30 – 9:00 PM) so s/he will be well rested and ready to learn.
2. Lay out school clothes and supplies each evening before school.
3. Allow ample time in the morning for dressing, eating, brushing teeth, etc.
4. Have a designated area for items that are to be taken to school (homework, papers requiring a parent's signature, etc.).
5. Make sure your child eats a nutritious breakfast.
6. Discuss with your child the importance of regular and timely school attendance and how it creates successful habits required for the workplace.

**IT IS VERY IMPORTANT THAT YOUR CHILD ARRIVES TO SCHOOL ON TIME (TEN MINUTES BEFORE CLASS BEGINS).** We have noticed a significant number of students arriving at school after the tardy bell. This not only causes a disruption in your child's learning, it disrupts the entire class to have students arriving late. We would appreciate it if parents could make an extra effort to insure that their child arrives at school on time.



## MAGAZINE DRIVE

***DUE TO POPULAR DEMAND, THE MAGAZINE DRIVE HAS BEEN EXTENDED TO OCTOBER 12<sup>TH</sup>.***

This will be the last day to turn in magazine orders for the Welby Way Magazine Drive. Please participate in this important school fundraiser.

## HAVE YOU CHANGED YOUR ADDRESS OR PHONE NUMBER?

If any Welby Way families have had changes in address, phone number, or any other important information this summer, please contact the office so your information can be updated. **SUBMISSION OF A ROSTER FORM IS NOT A SUBSTITUTE FOR NOTIFYING THE OFFICE OF CHANGES IN INFORMATION.** Please make sure the office can contact you when necessary by keeping your information current.



## EMERGENCY PREPAREDNESS PLANNING KITS ARE DUE NOW

If you have not turned in your Emergency Preparedness Planning kit, please turn it in now. If you have misplaced your instructions, a copy of the form is available online at [http://www.welbyway.org/school\\_forms.htm](http://www.welbyway.org/school_forms.htm). Please remember to include a \$5 donation for the school to purchase emergency water.

## IMPORTANT INFORMATION ABOUT TRAFFIC SAFETY

It is very important that all families follow the school traffic safety rules around the school. We have noticed the following **unacceptable** traffic practices at our school drop-off points: **Parents stopping in the middle of the street to pick up and drop off children; Cars parked and left unoccupied in the loading zones; Cars driving at unsafe speeds; Parents jay-walking with and without their children (a bad example to set!)**

We do not want to endanger any students, so we ask that you follow the school traffic pattern located in your Welby Way Handbook and online at <http://www.welbyway.org/handbook.htm>. Traffic moves in a clockwise direction only around the school. When driving in your car, make sure that the school is always on your right side.

## BANKING TIME TUESDAYS

Tuesday, October 5<sup>th</sup>, Welby Way will start our Banking Time Tuesdays. On these days, school will begin at the regular time of 8:05 AM but will end at 1:30 PM. Banking Time Tuesdays will extend through May 24, 2005.

## READERS ARE LEADERS

The "Readers are Leaders" form for October is going home now. **It is mandatory that all Welby Way students participate in this at-home reading program.** Each student is expected to read or be read to at home each day for a period of time based on the student's grade level. We believe that reading is the key to learning, and the more a child reads, the more successful he or she will be in school. Parents – please follow the directions on the "Readers are Leaders" form. The "Readers are Leaders" form is now available online at [http://www.welbyway.org/school\\_forms.htm](http://www.welbyway.org/school_forms.htm)



## WELBY WAY HALLOWEEN CELEBRATION PARADE

Welby Way is scheduled to have its annual Halloween Parade on Friday, October 29<sup>th</sup> at 10:00 AM on the playground (10/29 is a minimum day, ending at 12:35 PM). Students may dress up in costume to celebrate. Costume and masks should be appropriate to an elementary school setting. Replicas of weapons are *not* permitted on campus. Students and teachers participate in a Halloween Parade, after which each classroom usually celebrates with a class party. You will be informed by your child's teacher as to times and details prior to this event.

**DINNER DANCE OPPORTUNITY DRAWING:**

Tickets for this drawing are available until the Dinner Dance takes place November 19<sup>th</sup>. Tickets are \$1 each. ***OUR FABULOUS PRIZES INCLUDE AN XBOX GAME SET, A BMX BYCYCLE AND A GAMEBOY ADVANCE.*** Get your tickets now for your chance to win!

**WASHINGTON MUTUAL SCHOOL SAVINGS PROGRAM**



Started in 1923, the *School Savings* program gives students hands-on lessons about how to handle money responsibly with their own Washington Mutual savings accounts. The Washington Mutual financial centers work with elementary schools and parent volunteers to teach students positive savings habits through weekly Bank Days at school. Bank Days

will take place beginning Tuesday, October 5<sup>th</sup> and every Tuesday afterwards through the end of school year. We hope that all Welby Way parents will consider encouraging their child to participate in this educational program. Application forms are available on Bank Days near the office during recess.

**PLATT LIBRARY SUMMER READING PROGRAM**

**SUCH A DEAL – 22 LUNCHESES FOR \$20!**

Anne, our Welby Way Café manager, would like all of the Welby Way families to know that you can buy 22 lunch tickets for only \$20 – ***THAT IS LIKE GETTING TWO LUNCHESES FOR FREE!*** Lunch tickets may be purchased at the Café in the morning hours.

**SCHOOL FORMS AVAILABLE ONLINE**

Welby Way has a fabulous website with lots of important information about our school. Newly added to the site are a selection of school forms, including the Volunteer Flyer (on [http://www.welbyway.org/get\\_involved.htm](http://www.welbyway.org/get_involved.htm) ), the Readers are Leaders form, the Emergency Preparedness Planning form, the Field Trip Permission Form and the Transportation Waiver form (on [http://www.welbyway.org/school\\_forms.htm](http://www.welbyway.org/school_forms.htm) ). All of these forms are available for viewing and downloading in a PDF format (Adobe Reader Portable Document Format) and a form-fielded Word document.

*Thank you to all of our new parents who attended our **New Parent Mixer** last month. It was fun, and parents had an opportunity to learn more about Welby Way and meet other great parents! We plan on making this an annual event!*

**UPCOMING EVENTS**

- Playground Begins New Later Time - open until 6PM:*** Monday, October 4<sup>th</sup>
- Banking Time Days Begin:*** Tuesday, October 5<sup>th</sup> with a 1:30 PM dismissal
- School Photos:*** Thursday, October 14<sup>th</sup> or Friday, October 15<sup>th</sup>
- School Site Council Meeting:*** Tuesday, October 19<sup>th</sup> at 7:00 PM in the library
- Halloween Parade:*** Friday, October 29<sup>th</sup> at 10:00 AM
- Minimum Day:*** Friday, October 29<sup>th</sup> with dismissal at 12:35 PM  
(all Kindergarten students will attend 8:00 AM – 11:20 AM)